

3.1 Tipuri de plăci de circuit imprimat



Dr. Ing. Marius RANGU
Universitatea “Politehnica” Timișoara
Facultatea de Electronică și Telecomunicații
2009

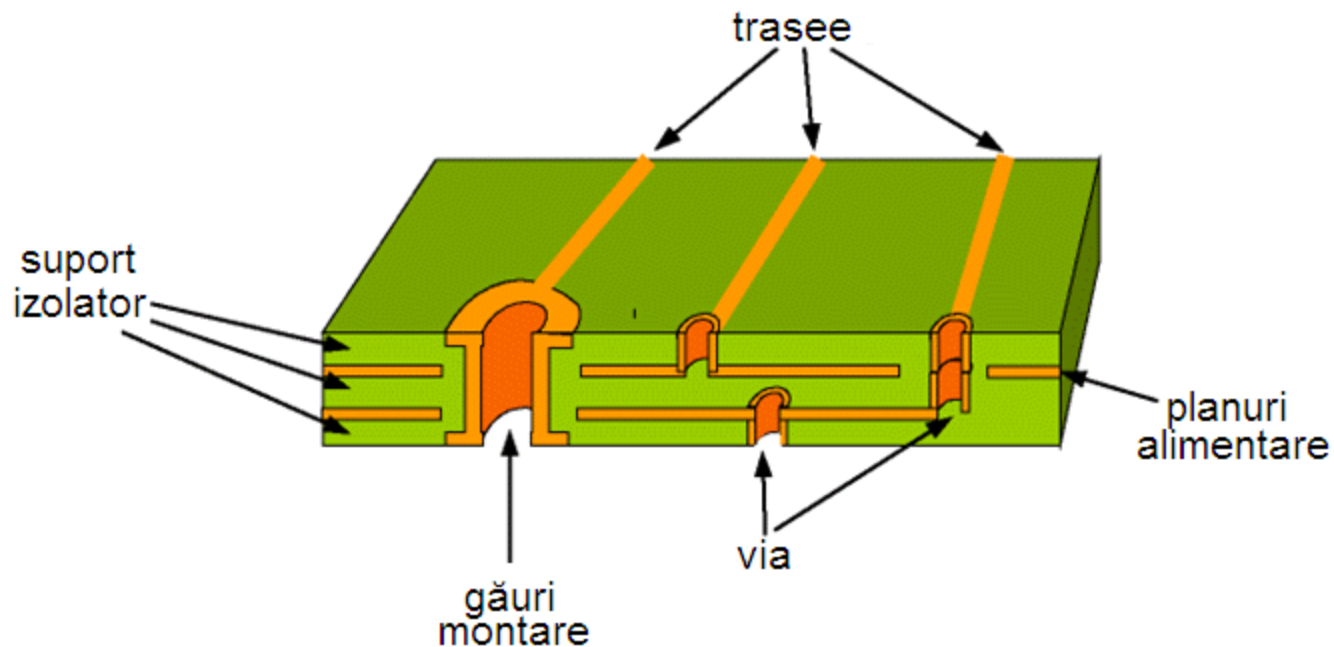


1. Circuitul imprimat

TERMINOLOGIE

- PCB = Printed Circuit Board
- PWB = Printed Wiring Board

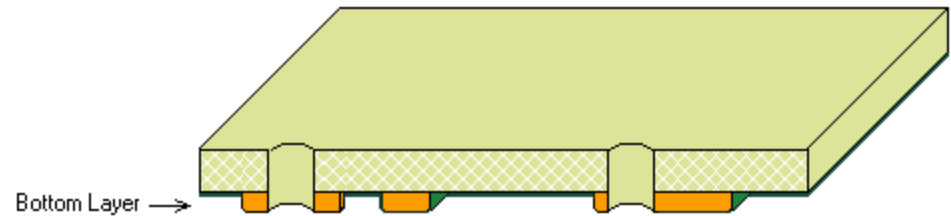
STRUCTURĂ



2. Clasificare după numărul nivelurilor conductoare

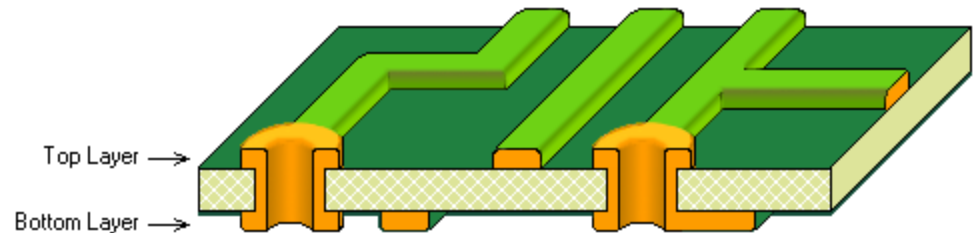
Simplu stratificate

- Un singur nivel conductor



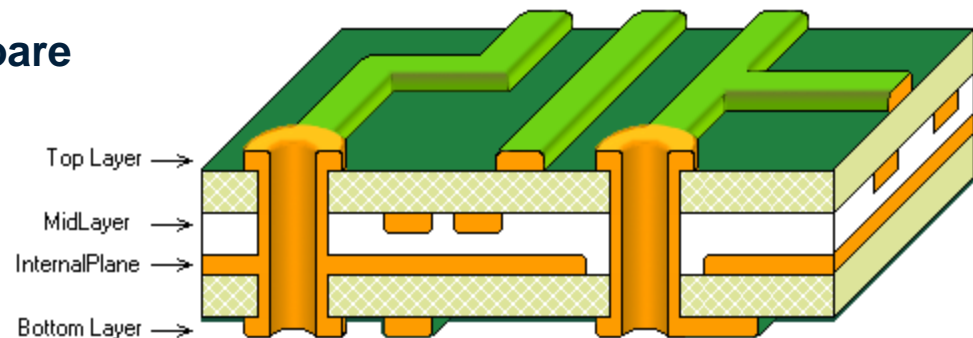
Dublu stratificate

- Două niveluri conductoare
- Găuri metalizate



Multi stratificate

- 4, 6, 8, ... 32 niveluri conductoare
- Găuri metalizate
- Niveluri de semnal (*layer*)
- Planuri de alimentare (*plane*)



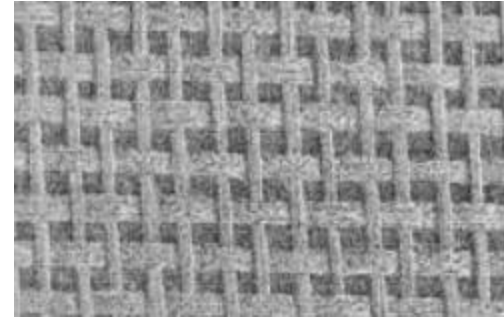
3. Clasificare după natura suportului izolator

Cu suport organic

Țesături din fibre de:

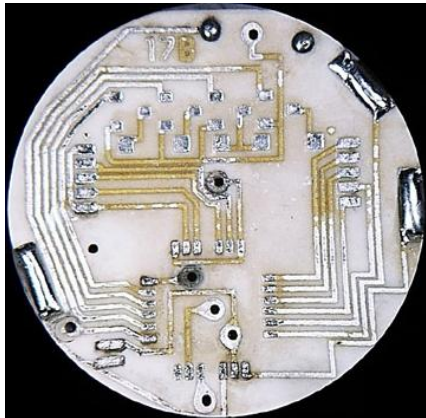
- hârtie (FR2, FR3)
- sticlă (FR4)
- aramide

} impregnate cu o rășină și
stabilizate termic

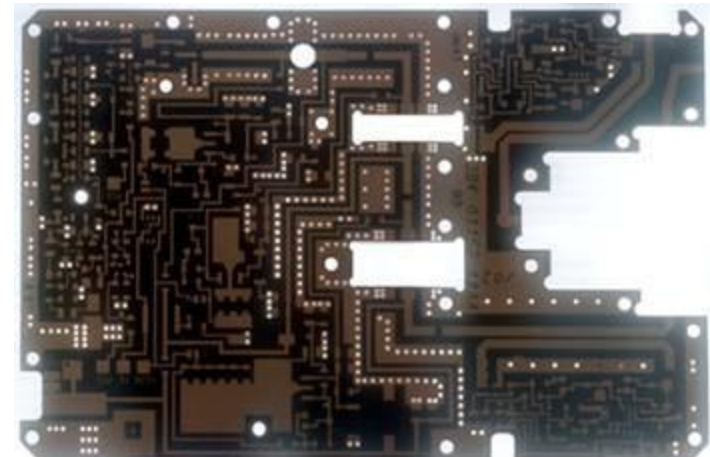


Cu suport anorganic

Materiale ceramice

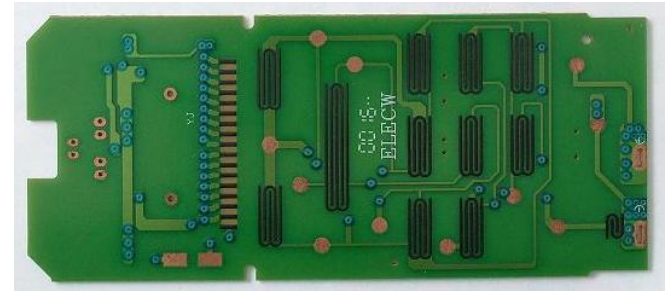


Aluminiu sau oțel



4. Clasificare după rigiditatea suportului izolator

Rigide



Flexibile



Rigi-flex

